

WORLD-WIDE LEADER FOR THE FOOD & BEVERAGE INDUSTRY



Sympak Beverage Platform



BEVERAGE PROCESSING & BOTTLING LINES



BEVERAGE SEAMING & PACKAGING LINES

Sympak Dairy Platform



DAIRY PROCESSING



CHEESE AND BUTTER PACKAGING

CHEESE AND BUTTER PACKAGING

Sympak Confectionery & Bakery Platform



CONFECTIONERY PROCESSING



CHOCOLATE MOULDING



WRAPPING



FLOW-PACK WRAPPING



PACKAGING



PALLETIZING

Sympak Convenience Food Platform



FOOD PROCESSING



FOOD FILLING AND PACKAGING LINES



SOUP CUBE PACKAGING

SOUP CUBE PACKAGING



Sympak Process Engineering - world-wide at your disposal

Headquarter:

Sympak Process Engineering GmbH
Meiereistr. 3
21493 Schwarzenbek • GERMANY
phone: +49 (0) 41 51 / 89 87 - 0 • fax: +49 (0) 41 51 / 89 87 - 10
info@sympak.de
www.sympak.com

Subsidiaries/Representatives:

Stephan bvba
Sluis 11
9810 Nazareth • BELGIUM
phone: +32 (0) 9 / 3 85 83 55 • fax: +32 (0) 9 / 3 85 81 87
info@stephan-belgium.be

Sympak France Sarl - Stephan Division -
ZAC du Mandinet
Rue des Campanules
77185 Lognes • FRANCE
phone: +33 (0) 1 / 64 80 54 30 • fax: +33 (0) 1 / 60 06 74 14
sympak-france@sympak.com

Sympak Asia Pacific Pte. Ltd. - Stephan Division -
23 Tagore Lane
#03-12 Tagore 23 Warehouse
Singapore 787601 • SINGAPORE
phone: +65 / 64 55 / 76 70 • fax: +65 / 64 55 / 62 20
sympak-asiapacific@sympak.com

Sympak Inc. - Stephan Division -
1385 Armour Boulevard
Mundelein, IL 60060 • USA
phone: +1 / 8 47 / 2 47 01 82 • fax: +1 / 8 47 / 2 47 01 84
stephansales-usa@sympak.com

Stephan UK Ltd.
PO Box 162
Deeside
CH5 3SZ • UK
phone: +44 (0) 8 45 / 4 56 08 23 • fax: +44 (0) 8 45 / 4 56 08 24
info@stephan-uk.co.uk

Lynkin' Ltd.
Av. Dr. Cardoso de Melo, 1470 - Cj. 1101/1102
04548-005 Vila Olimpia - Sao Paulo, SP • BRAZIL
phone: +55 (11) 30 44 44 21 • fax: +55 (11) 38 42 53 02
marco@sympak.com.br

Stephan Machinery GmbH & Co.
Stephanplatz 2
31789 Hameln • GERMANY
phone: +49 (0) 51 51 / 5 83 - 0 • fax: +49 (0) 51 51 / 5 83 - 1 89
info@stephan-machinery.com
www.stephan-machinery.com

Stephan Nederland B.V.
Plesmanweg 15
7602 PD Almelo • NETHERLANDS
phone: +31 (0) 5 46 / 87 41 11 • fax: +31 (0) 5 46 / 86 45 46
info@stephan.nl

Stephan Machinery GmbH & Co.
Sales Representative Switzerland
Mr Marcel Heeb
Gewerbehäus Tufiwies
Schickmattweg 8
8332 Russikon • SWITZERLAND
phone: +41 (0) 44 / 9 55 06 08 • fax: +41 (0) 44 / 9 55 06 88
stephan-machinery@bluewin.ch

OOO Sympak Moscow Head Office - Stephan Division -
Sretenskiy Boulevard 6/1, Korpus 2, Office 101
Moscow, 101000 • RUSSIA
phone: +7 / 4 95 / 9 37 59 25 • fax: +7 / 4 95 / 9 37 59 26
sympak-russia@sympak.com

OOO Sympak St. Petersburg Branch Office - Stephan Division -
Business Center "Evro-Auto" 3rd Floor, Office 332
Levashovskiy Pr. Dom 13, Litera G
St. Petersburg, 197110 • RUSSIA
phone: +7 / 8 12 / 1 02 11 84 • fax: +7 / 8 12 / 1 02 11 87
sympak-stpetersburg-russia@sympak.com

Stephan Machinery Polska Sp. z o.o.
Borowiec, ul. Leśna 148
62-023 Gadki • POLAND
phone: +48 (0) 61 / 8 17 12 01 • fax: +48 (0) 61 / 8 17 12 01
rosik@stephan-machinery.com

All content is subject to copyright and is owned and controlled by Stephan Machinery GmbH & Co. The content may not be copied, stored (in any medium), published or otherwise redistributed without the permission of Stephan Machinery GmbH & Co.



SYMPAK Automation

Process and packaging know-how & automation from one source

Turn-key solutions for a wide range of process and packaging applications

Automation plays an essential role to realise plant efficiencies, reduce manufacturing costs and manage product quality. Whether it is the automation of a manufacturing operation or of a business process, selecting the appropriate automation solution and the right supplier are critical decisions that every manufacturer must take.

Sympak companies have been suppliers of process and packaging units and complete lines for over 50 years. Our success is based on our competence in combining our process and packaging know-how together with our automation expertise to provide turn-key solutions for a wide range of process and packaging applications.

L&S 03.06. '2e 1011



SYMPAK BRANDS



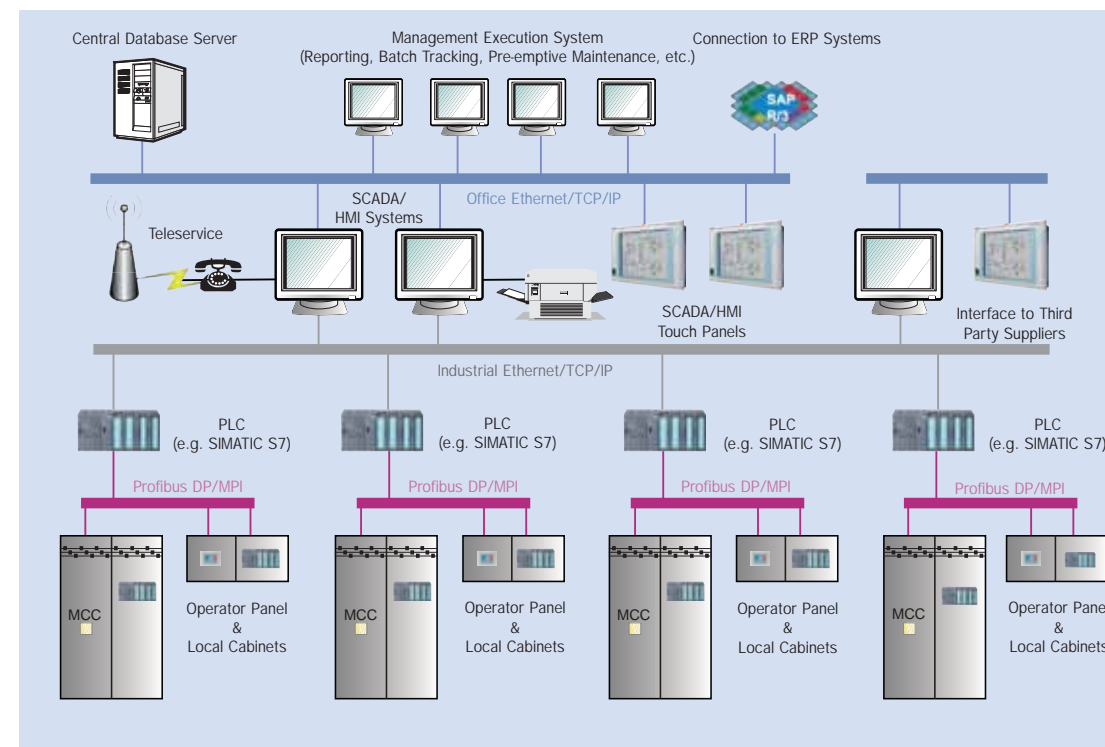
- > Your needs rather than a product portfolio defines the solution
- > Usage of proven leading-edge automation technology
- > Security of sourcing process equipment and automation know-how from a single supplier



Our Automation Business

Sympak Automation delivers complete and integrated automation solutions for the beverage, dairy, confectionery & bakery, and convenience food industries. As system integrators, we provide solutions that are driven entirely by our customers' needs rather than by products.

Selecting Sympak Automation as your partner for the automation of your equipment and your process lines provides you with the benefits mentioned on the left hand side.



integrated automation concept

- > Recipe management
- > Service & diagnostics
- > Batch reports
- > Production reports
- > Plant maintenance
- > Communication to ERP systems



Our MES Software Modules

Through the combination of IT and process technology expertise we are your partner to ensure a seamless flow of data between your process automation and your ERP system. The key to your success are our Manufacturing Execution Systems (MES) software modules.

Whether you need recipe management system, production reports or assistance for your maintenance scheduling, our modules will take care for your data. All data will be stored on a relational database server and can be incorporated into your overall data security policy.

- > Local operator panels and HMI / SCADA
- > Programmable Logic Controllers (PLC)
- > Manufacturing Execution Systems (MES)
- > Communication to ERP systems



Our Automation Solutions

Sympak Automation offers a wide range of automation solutions that add value to our customers' business.

All our solutions are based upon the latest technology standards. This ensures that we meet the demands of today's fast moving business environment.

We know that automation technology is constantly changing. By carefully positioning our solutions within the mainstream of technological development, we endeavour to protect our customers' investments in the future.

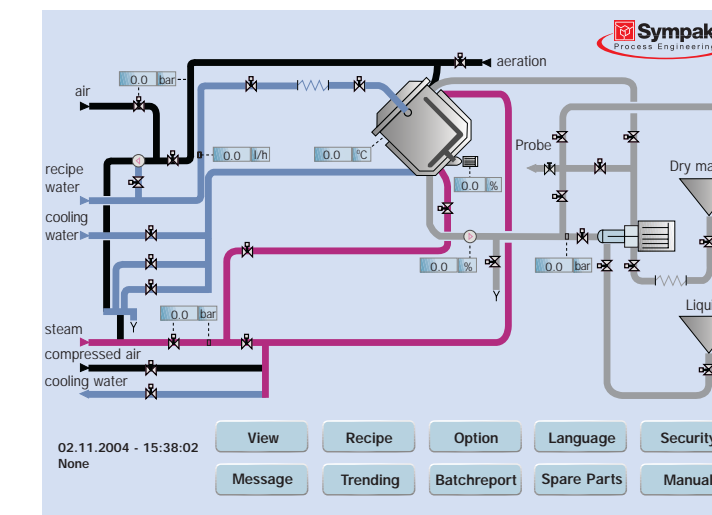
- > Operator interface
- > Batch control
- > Field bus systems
- > Process alarms
- > Data logging & trending
- > PID control
- > Phase sequencing



Our HMI Software Modules

The central design concept of our software architecture is to break large, complex software applications into a series of software modules. Our modules are specifically designed and built for the use in process automation applications.

Each module contains functionality that addresses a specific requirement within the process industry.



example of an operator screen

example of a batchreport

